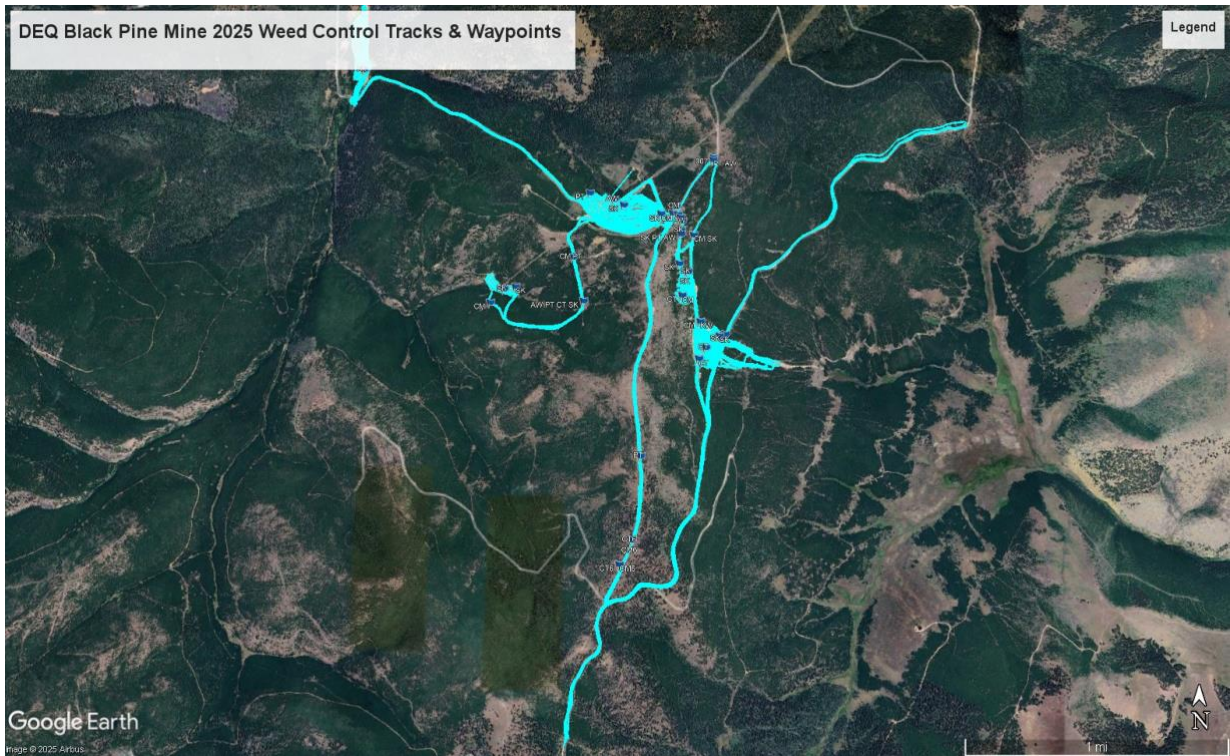


# Black Pine Mine 2025 Weed Control Summary

## Weed control area is approximately 71 Acres

**Total Acres Covered: 157.17— (Backpack 131.17 Acres —UTV 26 Acres)**

August (Backpack 56.17 acres—UTV 25 acres)—October (Backpack 75 Acres—UTV 1 Acre)



### **Black Pine Mine Overview:**

2025 is our seventh spraying at the Black Pine Mine. The number of noxious weeds on the site has reduced significantly since 2019. Besides soil disturbance and vehicles, the main weed vector at Black Pine is livestock. The cattle spread seed throughout all the pastures on-site. We sprayed about 25 feet on both sides of the road, which significantly reduces the possible spread of weeds from vehicles. In 2019, 100% of the roadway borders were infested with weeds. In 2025, less than 10% of the 25-foot buffer along roadsides had noxious weeds present. The desirable vegetation is coming in very slowly on most of the site.

### **Herbicide Used:**

Milestone (5oz/acre)—Escort (2oz/acre)—2,4-D (1pt/acre)  
SylTac (1oz/5 Gallon H2O)—Blue Dye (0.5oz/Gallon)

### **Black Pine Mine Weeds:**

Spotted Knapweed—Common Mullein—Perennial Pepperweed—Canada Thistle—Yellow Toadflax  
Leafy Spurge—Hoary Alyssum—Bladder Campion—Musk Thistle—Bull Thistle—Hemlock  
Absinth Wormwood—Field Bindweed—Dalmatian Toadflax—Henbane

### **Black Pine Mine Weed Control Acres 2019-2025 (Backpack & UTV Combined)**

YEAR	2019	2020	2021	2022	2023	2024	2025
Backpack	130	118	92	69.5	91.9	92	131.17
UTV	30	40	50	37.5	50	50	26
TOTAL ACRES	160	158	142	107	141.9	142	157.17